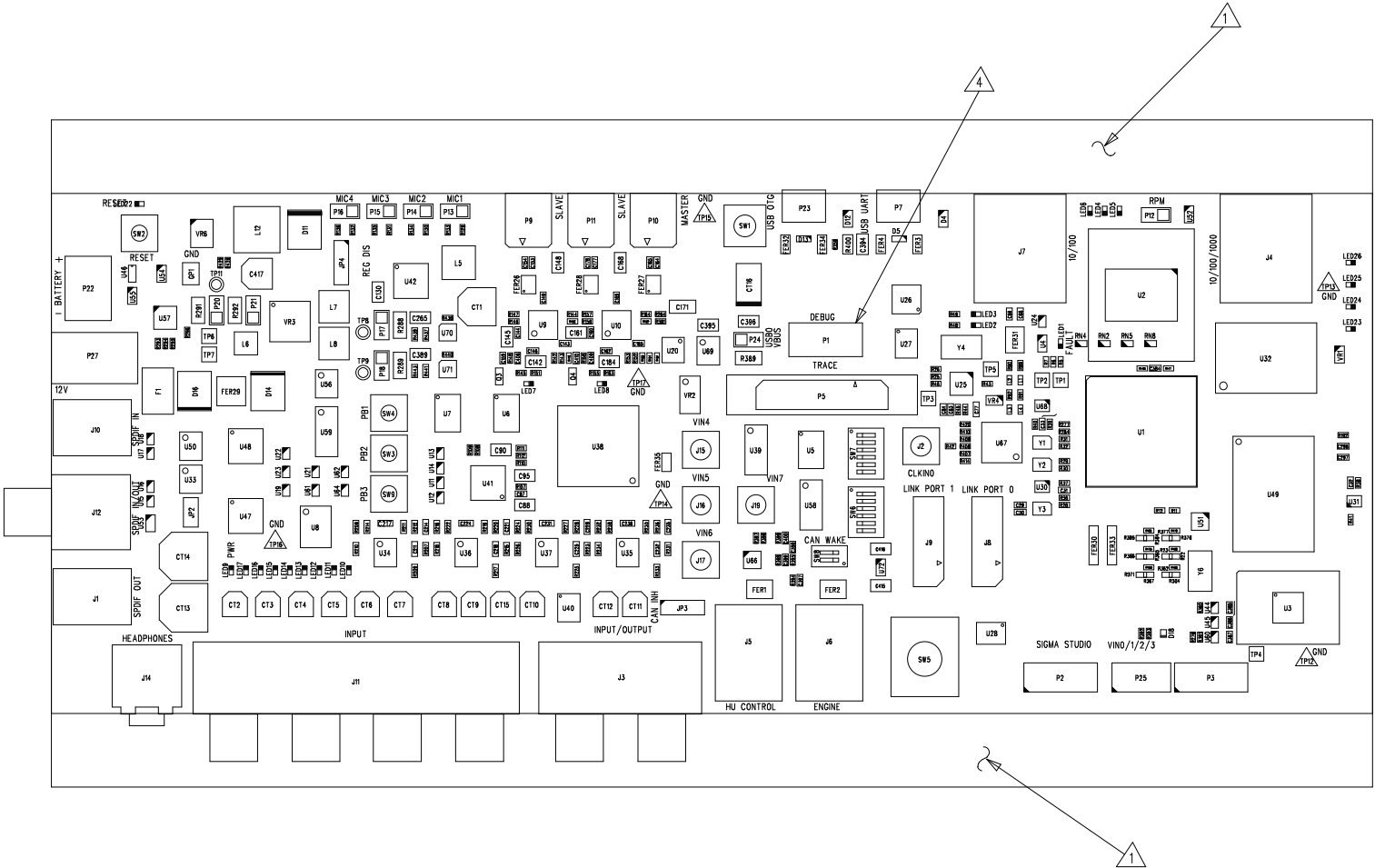



REVISIONS				
REV	DESCRIPTION OF CHANGE	DRFTR	DATE	APPROVED
0.1	NEW RELEASE	C.C.D.	08/20/14	
0.2	UPDATED PER ECO2014-086	C.C.D.	12/19/14	
1.0	UPDATED PER ECO2015-018	C.C.D.	05/12/15	
1.1	UPDATED PER ECO2016-014	C.C.D.	05/10/16	



REFERENCE DESIGNATIONS	
LAST USED	NOT USED
C424	C21, C138, C388, C392, C403-404
CT16	
D18	
F1	
FER35	
GP1	
J19	J18
JP4	JP1
L12	L9-11
LED26	LED18-21
P27	P4, P6, P8, P19, P26
PIA	
P1B	
P1C	
Q4	
R489	
RN8	RN6
SW9	
TP17	TP10
U72	U29, U43, U63, U65
VR6	VR5
Y6	Y5

ASSEMBLY NOTES:

1. BREAK OFF STRIPS AT COMPLETION OF ASSEMBLY.
2. MASK TESTPOINTS TP1-9, TP11-17 DURING ASSEMBLY.
3. ALL .033 DIA PLATED HOLES TO BE SOLDERED USING PASTE-IN-HOLE TECHNOLOGY
4. CUT PIN 7 OF P1.

UNLESS OTHERWISE SPECIFIED DIMENSIONS ARE IN INCHES TOLERANCES ARE : .xx +/- .010 .xxx +/- .005	CONTRACT NO.		 2 Elizabeth Drive Chelmsford, MA 01824	
	APPROVALS	DATE		
	MATERIAL	DRAWN C.C.D. 05/10/16	ASSEMBLY DRAWING TOP SIDE ADSP-SC584 EZ-BOARD	
	FINISH	CHECKED		
DO NOT SCALE THIS DRAWING	ENGINEERING		SIZE D	REV. 1.1
	QUALITY		DWG. NO. ASSMAA0448-2013	
MANUFACTURING		SCALE 2 : 1	SHEET 1 OF 2	